





EVO TOWNS & ELEVATOR FLAT

Designed with urban architecture in mind, this sophisticated presentation provides an upscale experience like no other. Choose from two spacious townhomes; one showcasing a first level multi-generational suite, or the single-level penthouse Flat featuring soaring 12 ft ceilings and private elevator. Ranging from approximately 1,687 to 1,988 square feet, these three to four bedroom floor plans offer “flexspace” options and generous outdoor space. Modern interior appointments include flat panel cabinets, quartz topped kitchen counters, and generous walk-in master suite shower with tiled surround.

ABOUT US

Meridian Communities was founded in 2014 on a people-centric philosophy that guides every step of the company's endeavors. Our mission is to create projects and communities that enhance the lives of the people who live, work, and shop there. The principal partners at Meridian Communities have built thousands of homes and believe our greatest asset, is happy homeowners. At Meridian Communities we align our business relationships with like-minded companies that understand and take seriously the social contract that is inherently made through the creation of our communities, which is to responsibly develop lasting, environmentally friendly projects that our customers are happy to call home.



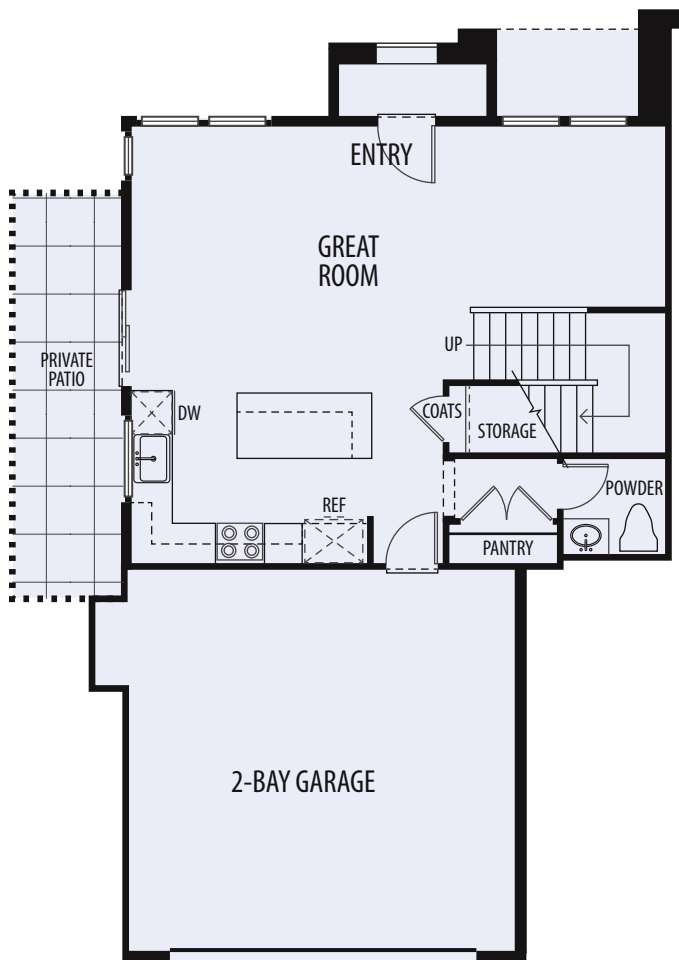
MERIDIAN
COMMUNITIES



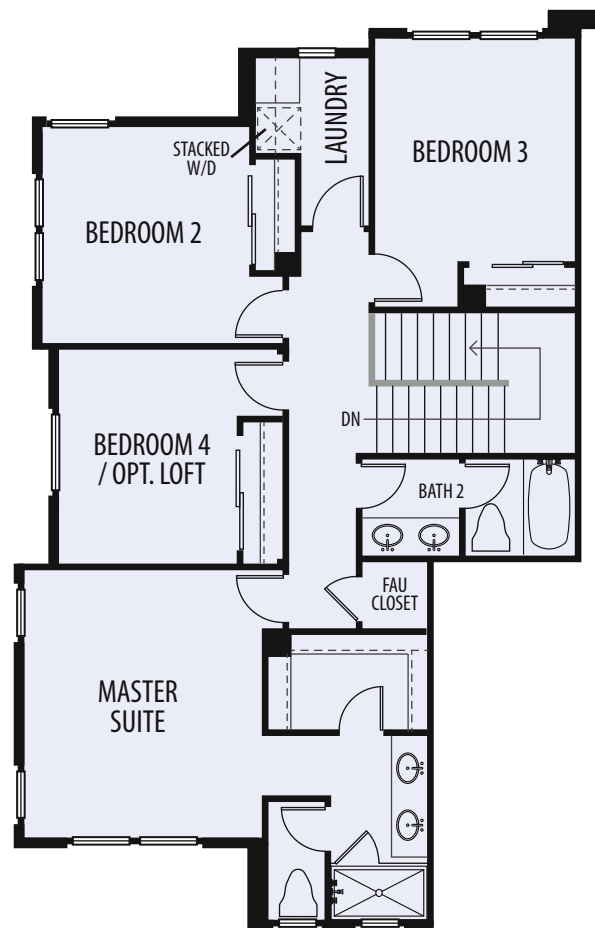
PLAN ONE



- Approx. 1,687 sq. ft. ■ 4 bedrooms or 3 bedrooms & loft ■ 2½ baths
- Separate dining room ■ Kitchen with island ■ Two-bay garage ■ Private patio



FIRST FLOOR

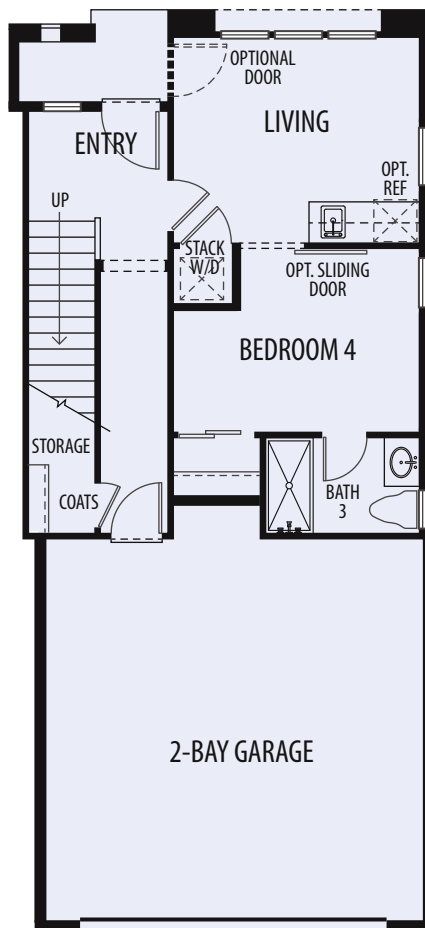


SECOND FLOOR

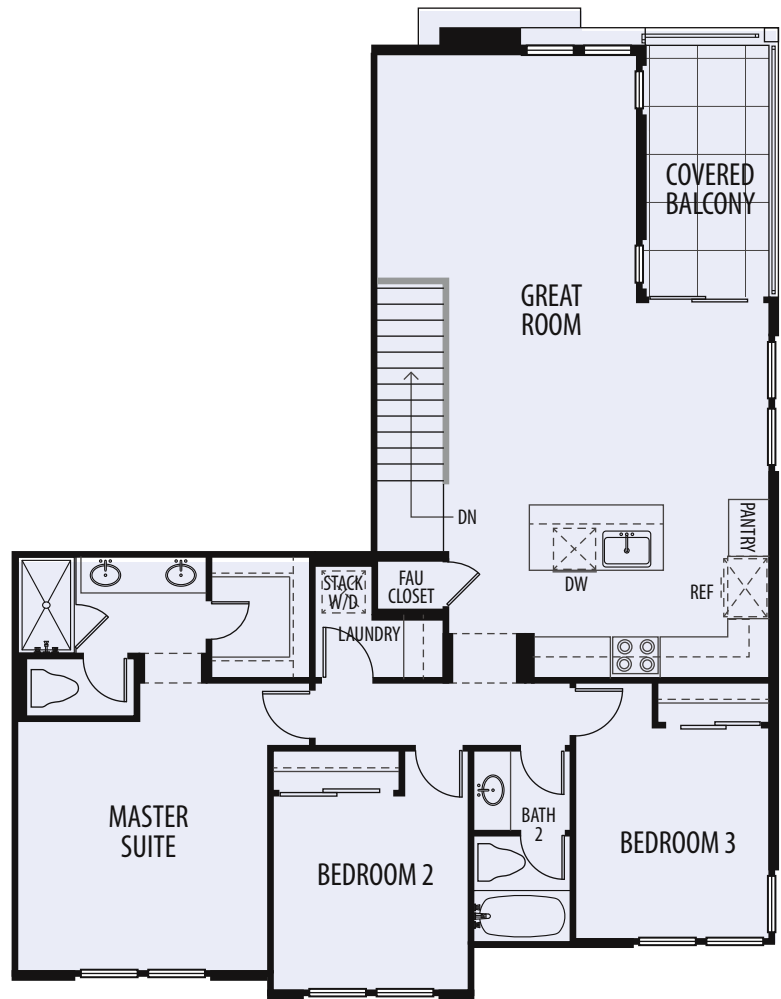


PLAN TWO

- Approx. 1,827 sq. ft. ■ 4 bedrooms ■ 3 baths ■ Great room with dining area
- Kitchen with island ■ Two-bay garage ■ Covered balcony



FIRST FLOOR



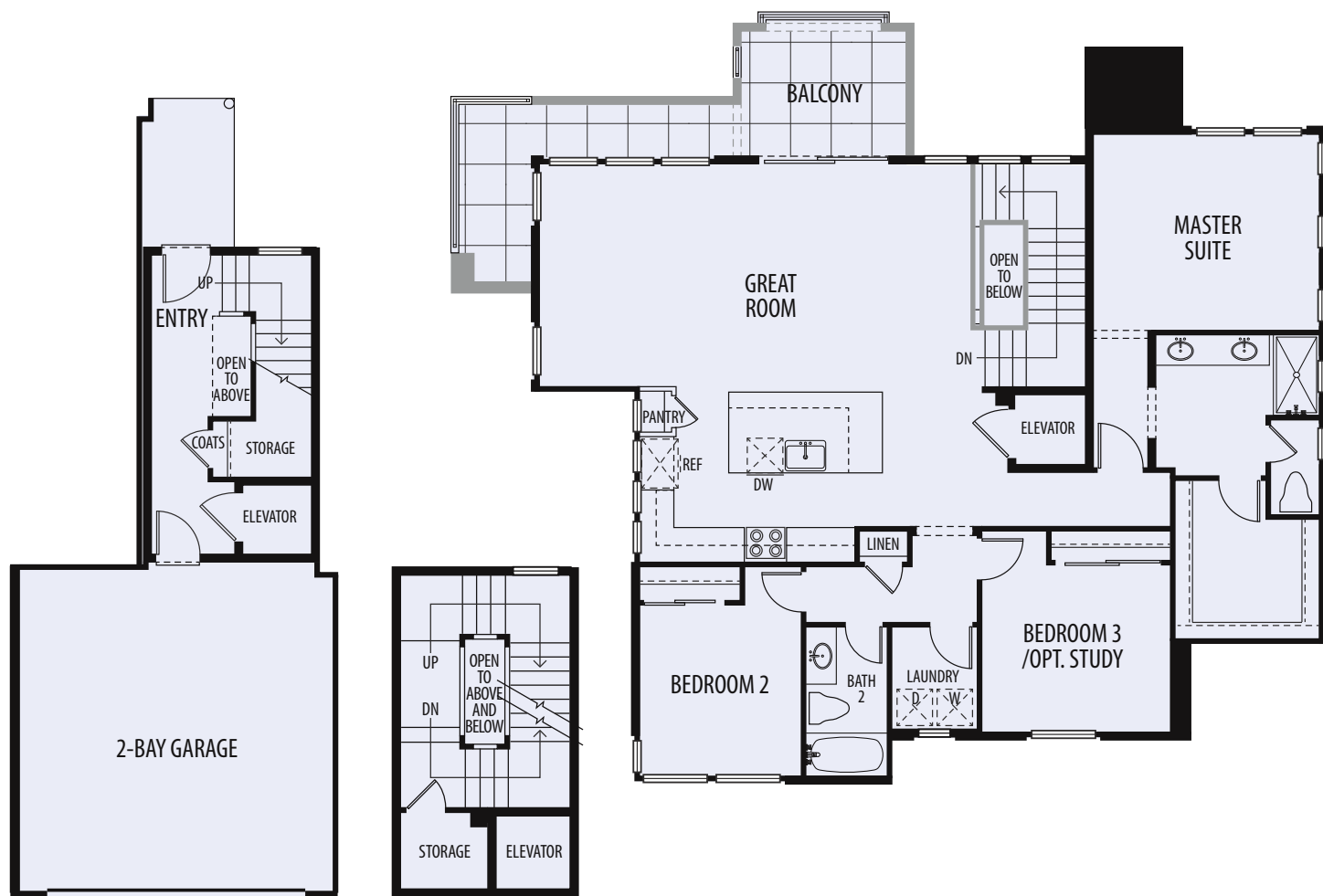
SECOND FLOOR



PLAN THREE

ELEVATOR FLAT

- Approx. 1,958 sq. ft. ■ 3 bedrooms or 2 bedrooms & study ■ 2 baths ■ Great room
- Kitchen with island ■ Two-bay garage ■ Wrap around balcony ■ Private elevator

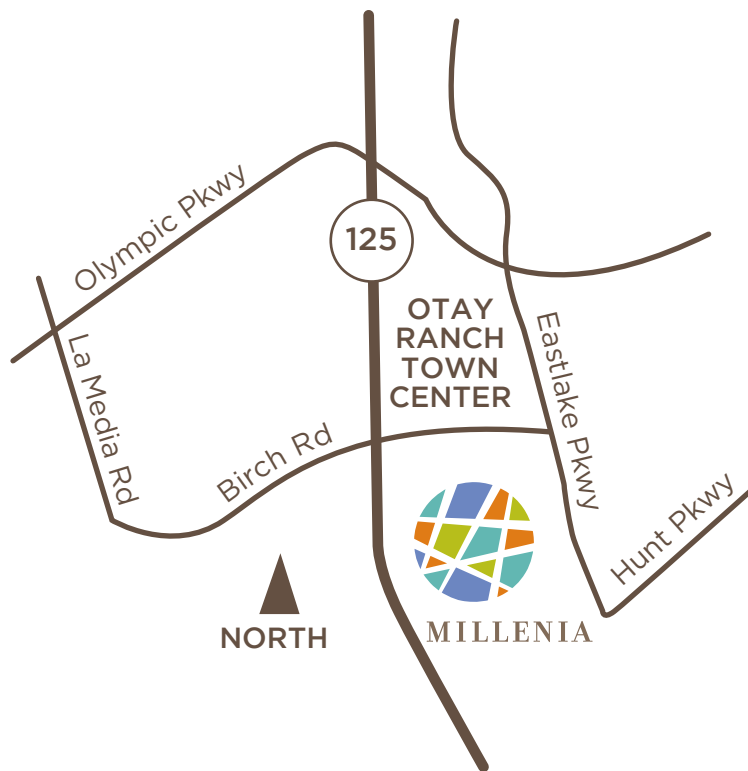


FIRST FLOOR

SECOND FLOOR

THIRD FLOOR





2060 Foxtrot Loop, Chula Vista, CA 91915

MeridianNewHomes.com



In a continuing effort to improve product and design Meridian Development reserves the right to make changes to plans, feature, pricing and without notice or obligation. Floor plans and renderings are artist conception and may vary. All square footages are approximate.

