





TRIO GARDEN HOMES

Trio matches your active lifestyle with your passion for family. With spacious master suites, private rear yards, and a first floor full bedroom with ensuite bath floor plan, these attached 2-story garden homes are perfect for growing or extended families. Interior highlights include Shaker panel cabinetry, polished slab granite kitchen counters and an entertainment friendly double-oven range. Choose from 3 to 4 bedrooms and approximately 1,653 to 1,880 square feet.

ABOUT US

Meridian Communities was founded in 2014 on a people-centric philosophy that guides every step of the company's endeavors. Our mission is to create projects and communities that enhance the lives of the people who live, work, and shop there. The principal partners at Meridian Communities have built thousands of homes and believe our greatest asset, is happy homeowners. At Meridian Communities we align our business relationships with like-minded companies that understand and take seriously the social contract that is inherently made through the creation of our communities, which is to responsibly develop lasting, environmentally friendly projects that our customers are happy to call home.



MERIDIAN
COMMUNITIES

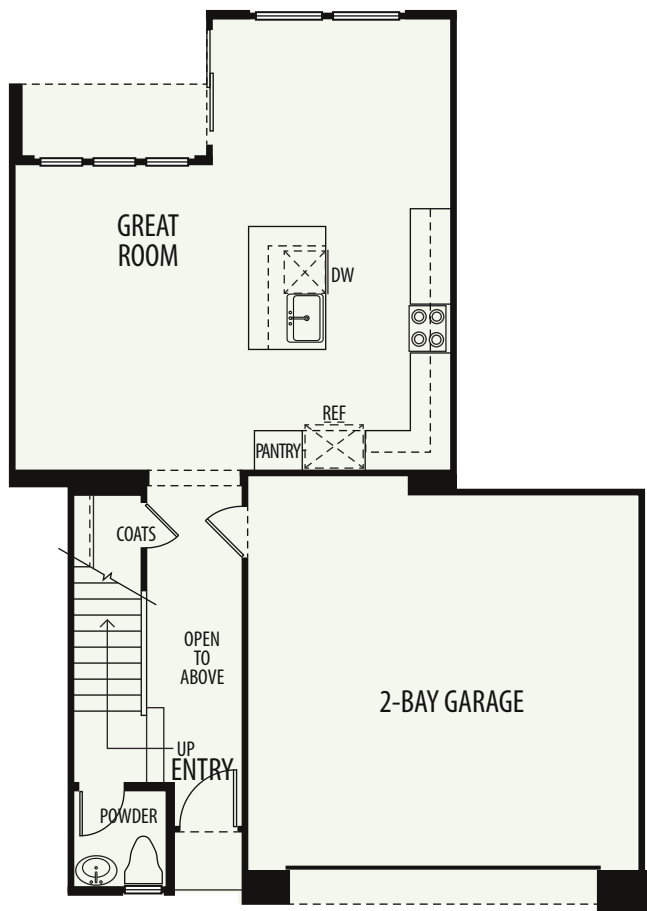


PLAN ONE

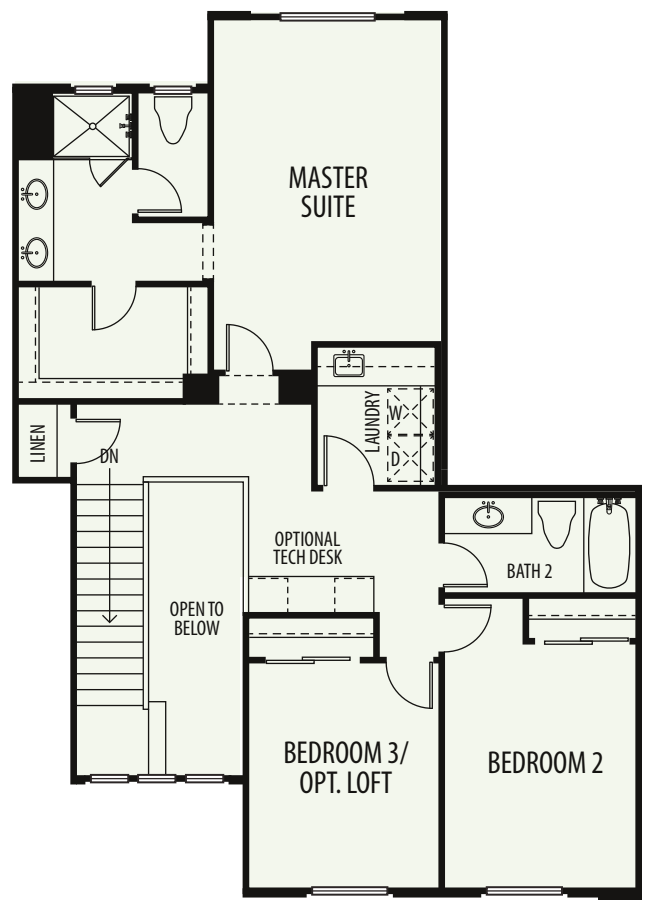


- Approx. 1,653 sq. ft. ■ 3 bedrooms or 2 bedrooms & loft ■ 2½ baths
- Separate dining area ■ Kitchen with island ■ Two-bay garage ■ Private patio

PRIVATE REAR YARD
(SIZE VARIES)



FIRST FLOOR



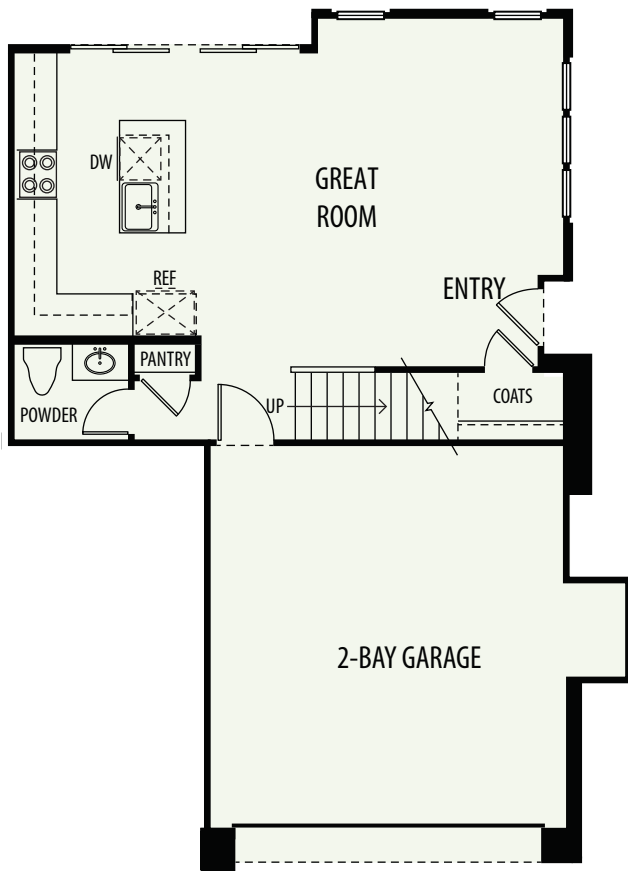
SECOND FLOOR



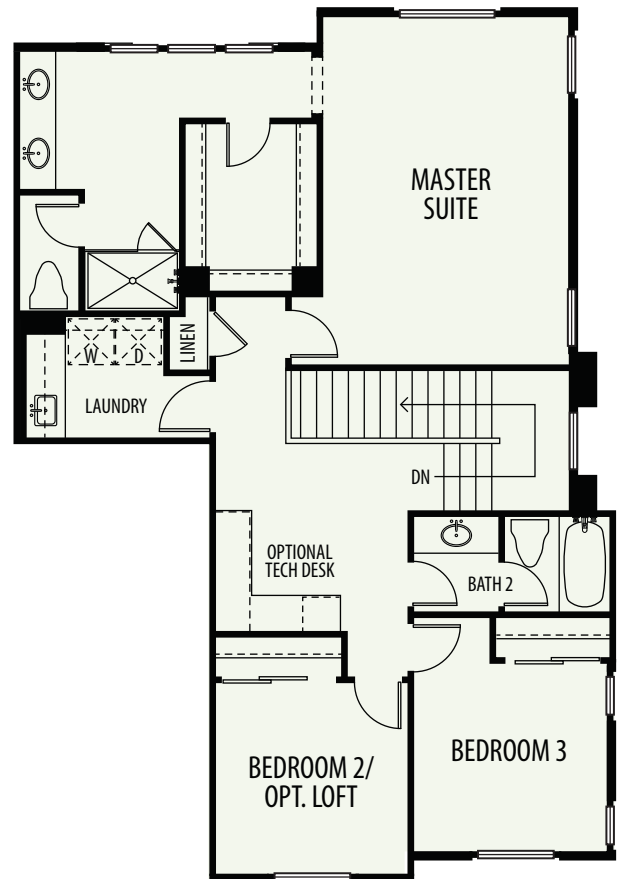
PLAN TWO

- Approx. 1,662 sq. ft. ■ 3 bedrooms or 2 bedrooms & loft ■ 2½ baths
- Great room ■ Kitchen with island ■ Two-bay garage

PRIVATE REAR YARD
(SIZE VARIES)



FIRST FLOOR



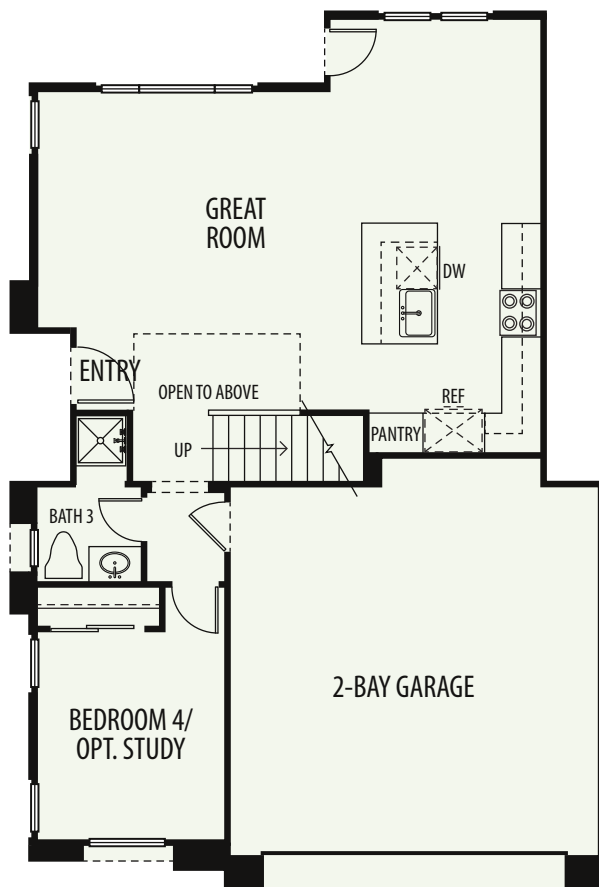
SECOND FLOOR



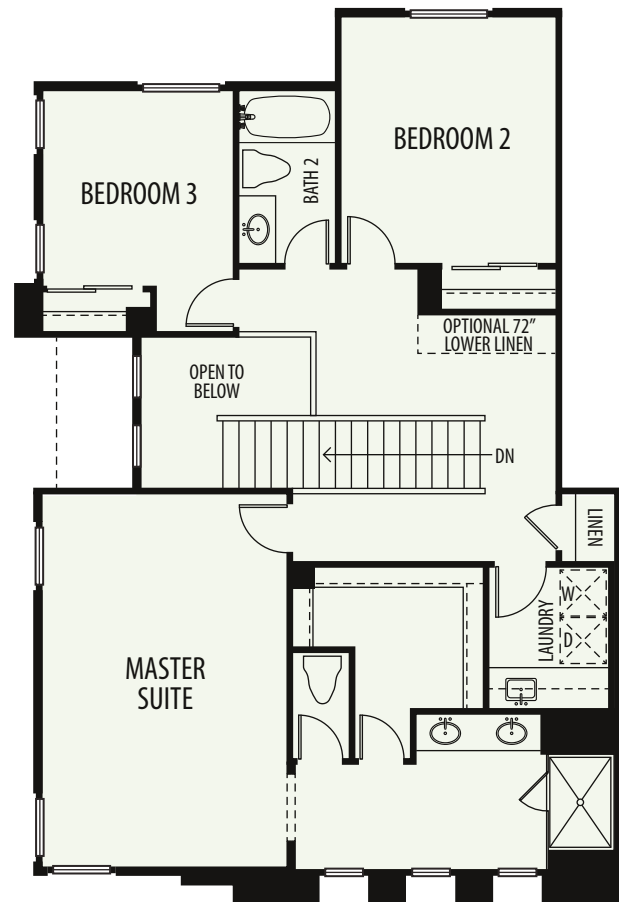
PLAN THREE

- Approx. 1,880 sq. ft. ■ 4 bedrooms or 3 bedrooms & study ■ 3 baths
- Separate dining room ■ Kitchen with island ■ Two-bay garage

PRIVATE REAR YARD
(SIZE VARIES)

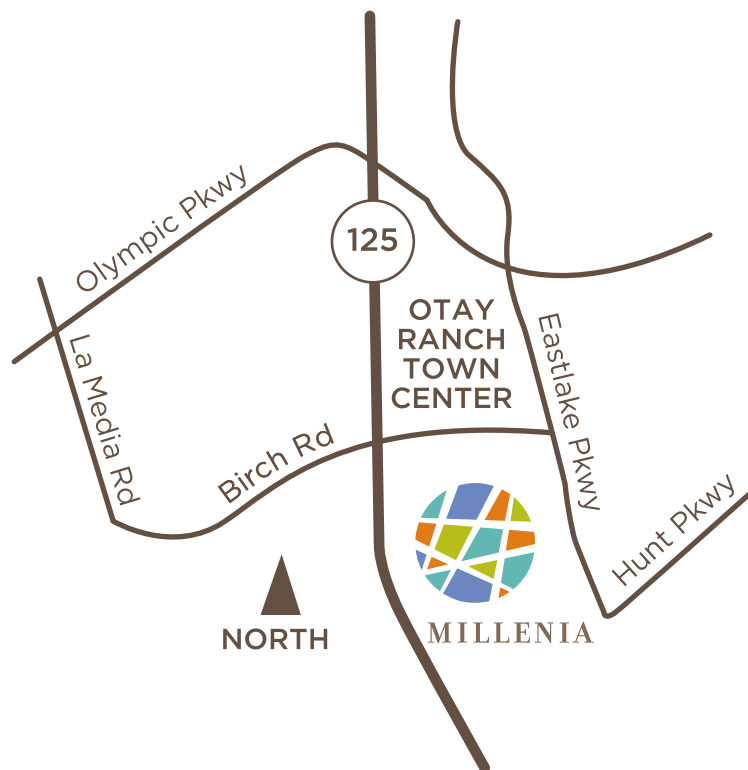


FIRST FLOOR



SECOND FLOOR





2060 Foxtrot Loop, Chula Vista, CA 91915

MeridianNewHomes.com



In a continuing effort to improve product and design Meridian Development reserves the right to make changes to plans, feature, pricing and without notice or obligation. Floor plans and renderings are artist conception and may vary. All square footages are approximate.

